

## AFTER YOUR PERMIT IS ISSUED:

For new construction you will be required to submit a Lowest Floor Elevation Form signed and sealed by a Registered Land Surveyor or Professional Engineer after the placement of the lowest floor, but prior to beginning any work. This form will be reviewed by the floodplain management staff and when approved you will be authorized to resume Construction.

Also, for new construction, you will be required to submit an Elevation Certificate signed and sealed by a registered Land Surveyor or Professional Engineer, just prior to receiving final building inspection approval. Upon approval of this Certificate by floodplain management staff, final building inspection will proceed.

For requirements on all other construction or development types, please contact the Floodplain Development office.

## IMPORTANT PHONE NUMBERS

### FLOODPLAIN DEVELOPMENT

City Hall  
710 North 20th Street  
Room 500  
(205) 254-2479

### ENGINEERING

City Hall  
710 North 20th Street  
Room 220  
(205) 254-2343

### PERMITTING SERVICES OFFICE

City Hall  
710 North 20th Street  
Room 210  
(205) 254-2211

### ARCHITECTURE

City Hall  
710 North 20th Street  
Room 400  
(205) 254-2247

### FIELD OFFICE

433-68th Street North  
(205) 838-1508

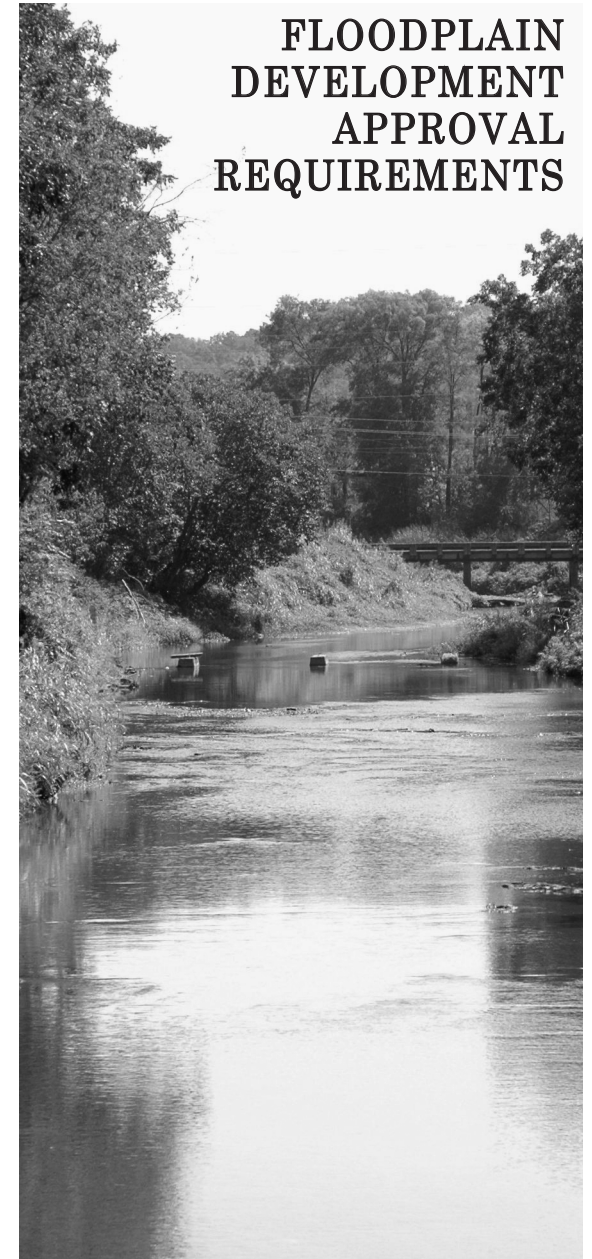
*For information on: subdivision, zoning, commercial revitalization, (address verification, construction, excavation, soil erosion and blasting permits) please contact the Permitting Services Office.*



Department of Planning, Engineering & Permits  
710 North 20th Street  
Birmingham, AL 35203  
(205) 254-2479  
(205) 254-2738 Fax

[www.birminghamal.gov](http://www.birminghamal.gov)

# FLOODPLAIN DEVELOPMENT APPROVAL REQUIREMENTS



DEPARTMENT OF PLANNING,  
ENGINEERING & PERMITS

Larry P. Langford  
Mayor

Andre V. Bittas  
Director

# FLOODPLAIN DEVELOPMENT APPROVAL REQUIREMENTS

## WHAT TYPE OF WORK REQUIRES FLOODPLAIN DEVELOPMENT REVIEW APPROVAL?

Any development taking place in the 100 Year Floodplain. Development means any manmade change to improved or unimproved real estate, including, but not limited to, buildings or other structures, mining, dredging, filling, grading, paving, excavating or drilling operations, or storage of materials or equipment.

## WHERE DO I OBTAIN THE PERMIT APPLICATION?

A permit application may be obtained from the Department of Planning and Engineering and Permits, 2nd Floor, City Hall, Room 210, telephone number (205) 254-2904.

## WHAT IS THE REVIEW PERIOD?

The typical review period may vary, but on average is approximately 3 to 5 working days.

## ARE THERE ANY FEES?

Please contact the Floodplain Development Program at (205) 254-2479 for information regarding fees.

## WHAT ARE THE REQUIREMENTS?

- ▶ The applicant must completely fill out an application for Permit to Develop in a Flood Hazard Area.
- ▶ All drawings must be submitted on 18 inch by 24 inch size paper minimum.
- ▶ The drawings must include the following:
  - a site plan(including all required flood protection information);
  - an emergency response plan when using dry floodproofing for flood protection;
  - a No-Rise Certification/Analysis for floodway developments only;
  - a Base Flood Elevation determination for Approximate Zone developments only; and
  - a copy of the variance resolution for flood-related granted variances.
- ▶ All drawings that are for assembly must be sealed by an Alabama licensed architect or engineer.

## STEPS TO OBTAIN FLOODPLAIN DEVELOPMENT APPROVAL

1. Obtain an Application for Permit to Develop in a Flood Hazard Area.
2. Complete Permit Application and submit along with all required submittals checked on the permit application to counter staff for application completeness review.
3. Once staff has confirmed that your application is complete, it will be forwarded to the floodplain management staff for plans review and approval.
4. Upon approval you will be required to sign a Floodplain Determination form, acknowledging the flood protection requirements and/or approval conditions. Also, you may receive, as-built certification forms to be completed after the permit is issued.